



WAVETHRU
by AGC

Solution for indoor
mobile coverage

And you,
How do you make sure your tenants have
high-quality mobile coverage?

AGC

« You could say that mobile coverage has become the fifth utility in a building, as much an expected necessity as gas, water, electricity, and broadband».

Source: Smart Buildings Magazine, The struggle for indoor mobile coverage and the solutions, John Hatcher, 2017, according to a study conducted by Arqiva in the United Kingdom.

→ «After multiple corporate tenants in my office building terminated their leases, I finally understood just how important high-quality mobile telephone coverage is for our occupants»

Valérie P., Facility Manager in Brussels

→ «My colleagues and I were fed up with poor mobile coverage and dropped calls in the office. Callers often could not get through to us or we had to go outside to make a call. Our business was heavily impacted by these issues»

Georges H., attorney and tenant of an office space in Ghent



MAKE SURE YOUR TENANTS HAVE HIGH-QUALITY MOBILE COVERAGE WITH WAVETHRU!

What is it?

WAVETHRU is a **surface treatment** to the glazing that allows mobile signals **to better penetrate** into the building. It's as simple as that. **And it doesn't affect the appearance or thermal performance of your glazing. We promise!**

And now everyone's **HAPPY!**

HAPPY

OCCUPANT



- Indoor mobile coverage **restored**.
- **Perfect reception** guaranteed for occupants, who can once again use their phones again to actually make calls!

HAPPY

MANAGER

→ ALL IN ONE

WAVETHRU improves mobile coverage for all operators and all frequencies (Tetra/2G/3G/4G/5G). And you'll be all set for future connectivity technologies.

No need to do anything or make any changes

→ LOW CAPEX & ZERO OPEX

WAVETHRU is a passive solution: it doesn't require electricity, doesn't consume energy, doesn't need maintenance and doesn't have to be replaced.

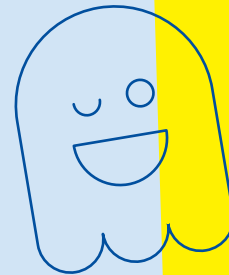
And it will cost you just half the price of an active system (DAS or repeater).



→ SO EASY & FLEXIBLE

Our technical team will come to your building to apply the WAVETHRU treatment directly to your existing glazing, exactly where you need it. We take care of everything quickly and efficiently, all nice and tidy since we don't need to install any equipment or run any wires.

You won't even notice we're there!



Interested in a **free**, no-obligation audit of your building?

Want to find out exactly how good the mobile phone coverage is in your building?
Take advantage of our free audit and then you'll know for sure.

If your **commercial building**

- is located in **Belgium**,
- in an **urban area**,
- and is fitted with **double glazing**,

then our experts will be happy to come to your offices free of charge to measure your mobile signal quality.

**You'll receive our full report
within two weeks.**

**FREE
OF
CHARGE!**

Feel free to contact us.
We promise to get back to you
within 48 hours!

By phone:

Xavier Radu: +32 474 76 92 12

Simon Castex: +32 499 31 23 04

By email: wavebyagc@eu.agc.com